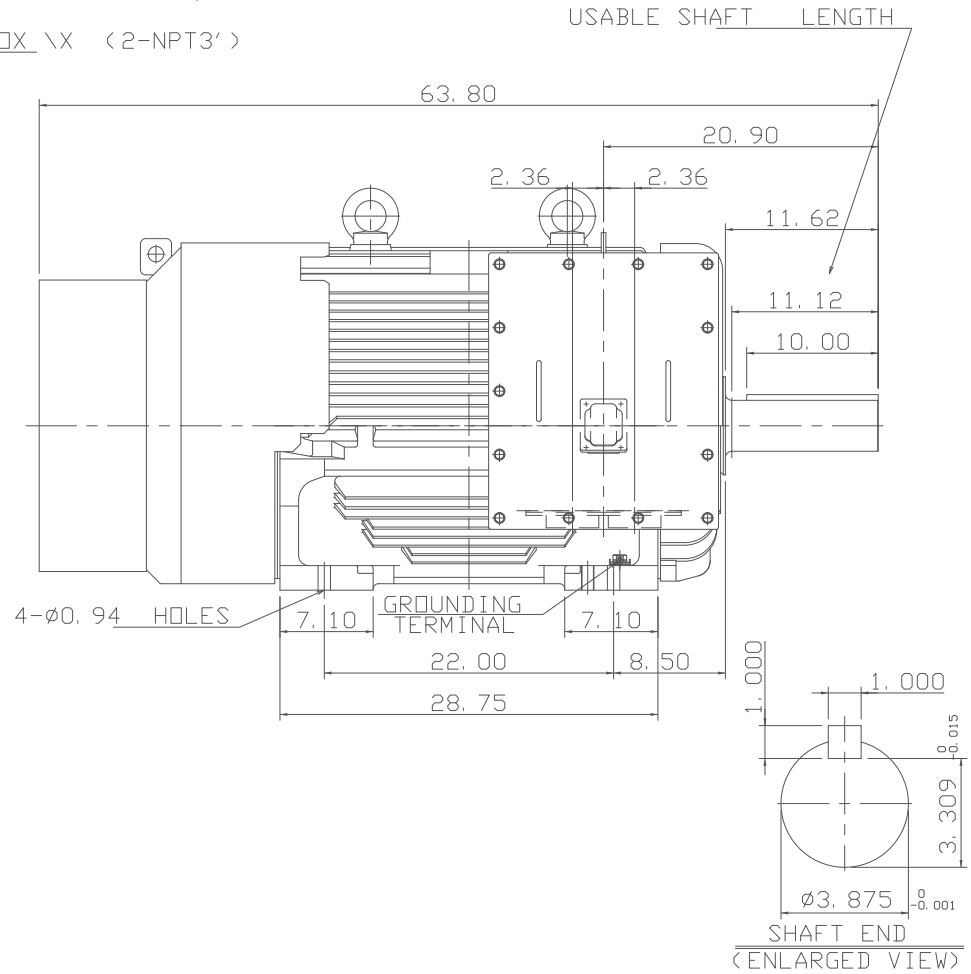
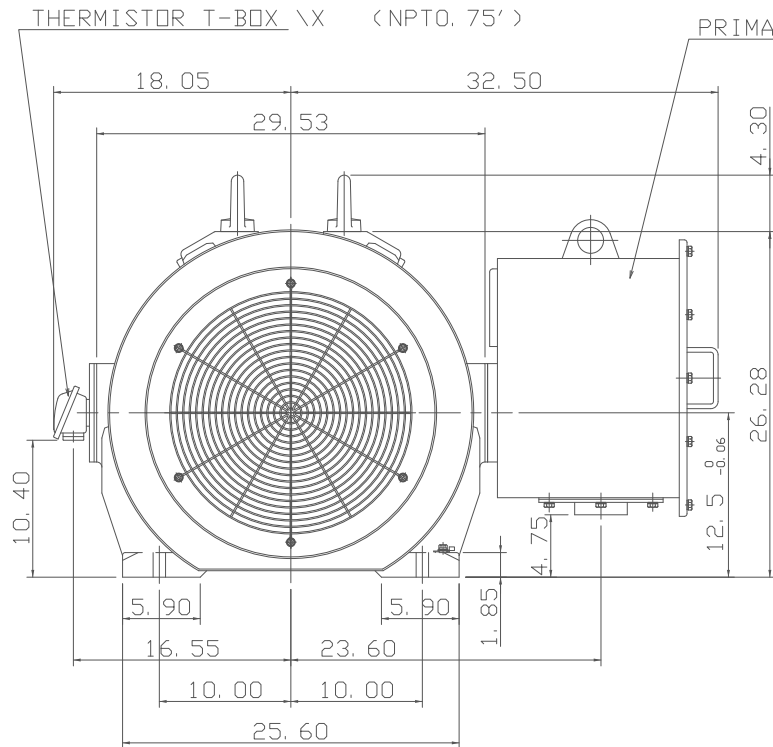


TYPE	OUTPUT		POLE	TIME RATING	VOLTAGE V	Hz	SYN. SPEED R. P. M
	HP.	kW.					
AEHH-GD	250	186.5	6	CONT.	460	60	1200

TOTALLY ENCLOSED FAN-COOLED TYPE, SQUIRREL-CAGE ROTOR



NOTE:

1. DIMENSIONS IN inch
2. FRAME NO.5007C
3. F CLASS INSULATION, S. F. 1. 15
4. FOR BELT DRIVE
5. ENCLOSURE: IP55
6. BEARING SIZE: DRIVE-END NU324C3
OPP. DRIVE-END 6320
7. NON-SPARKING FAN
8. WITH THERMISTOR: PTC 140°C 3PCS
9. MOTOR APPROX. WEIGHT: 3245lb

DATE
FEB. 01, 2018
CATALOG NO.:
CDP2506R

OUTLINE DIMENSIONS
3-PHASE INDUCTION MOTOR

DWN.	J. WANG	MAR·22·2017
CHKD.	H. HUANG	MAR·22·2017
APPD.	C. LIU	MAR·22·2017

TEC Westinghouse

DWG NO. REV: 02
4B040T953